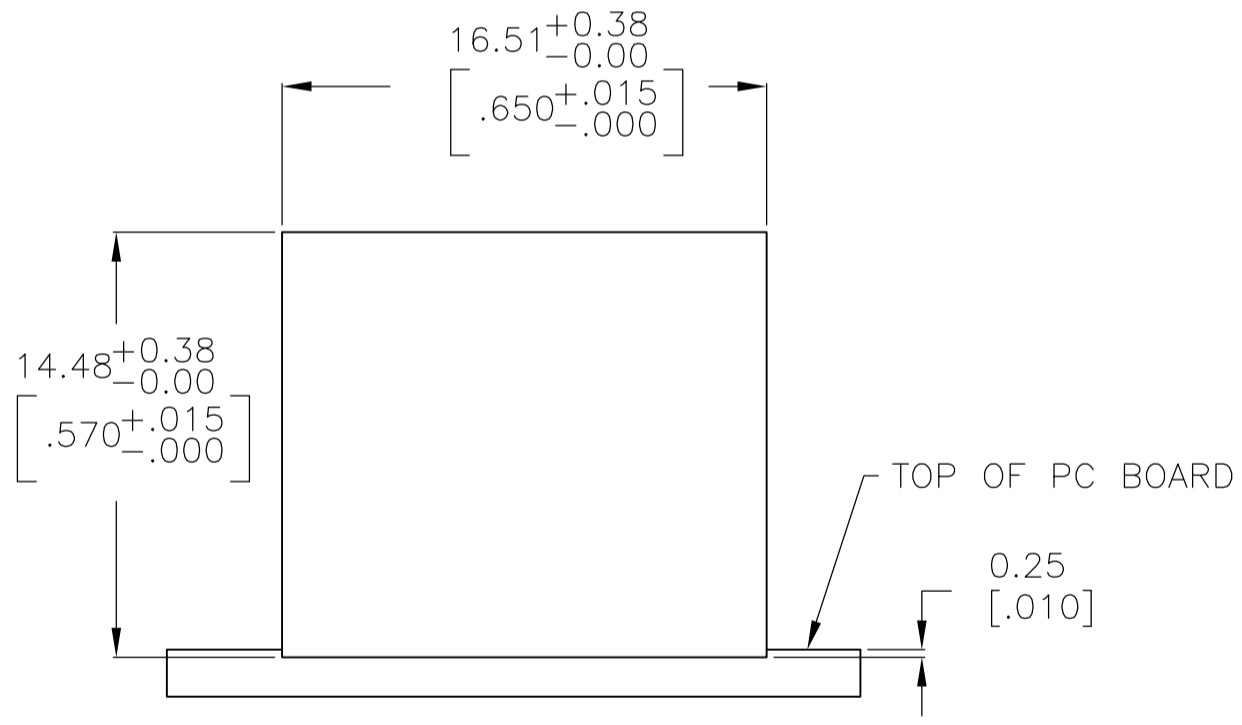
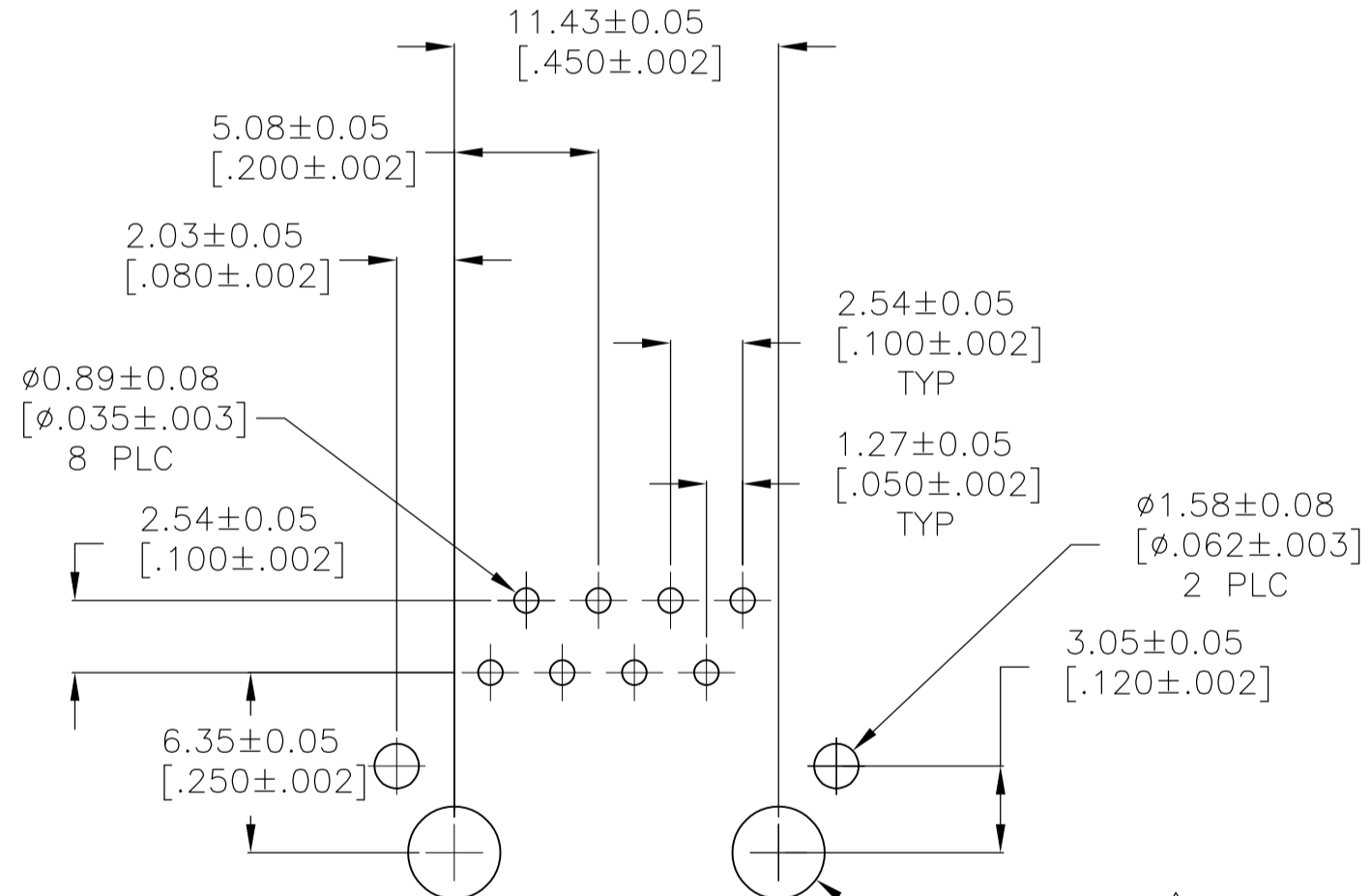
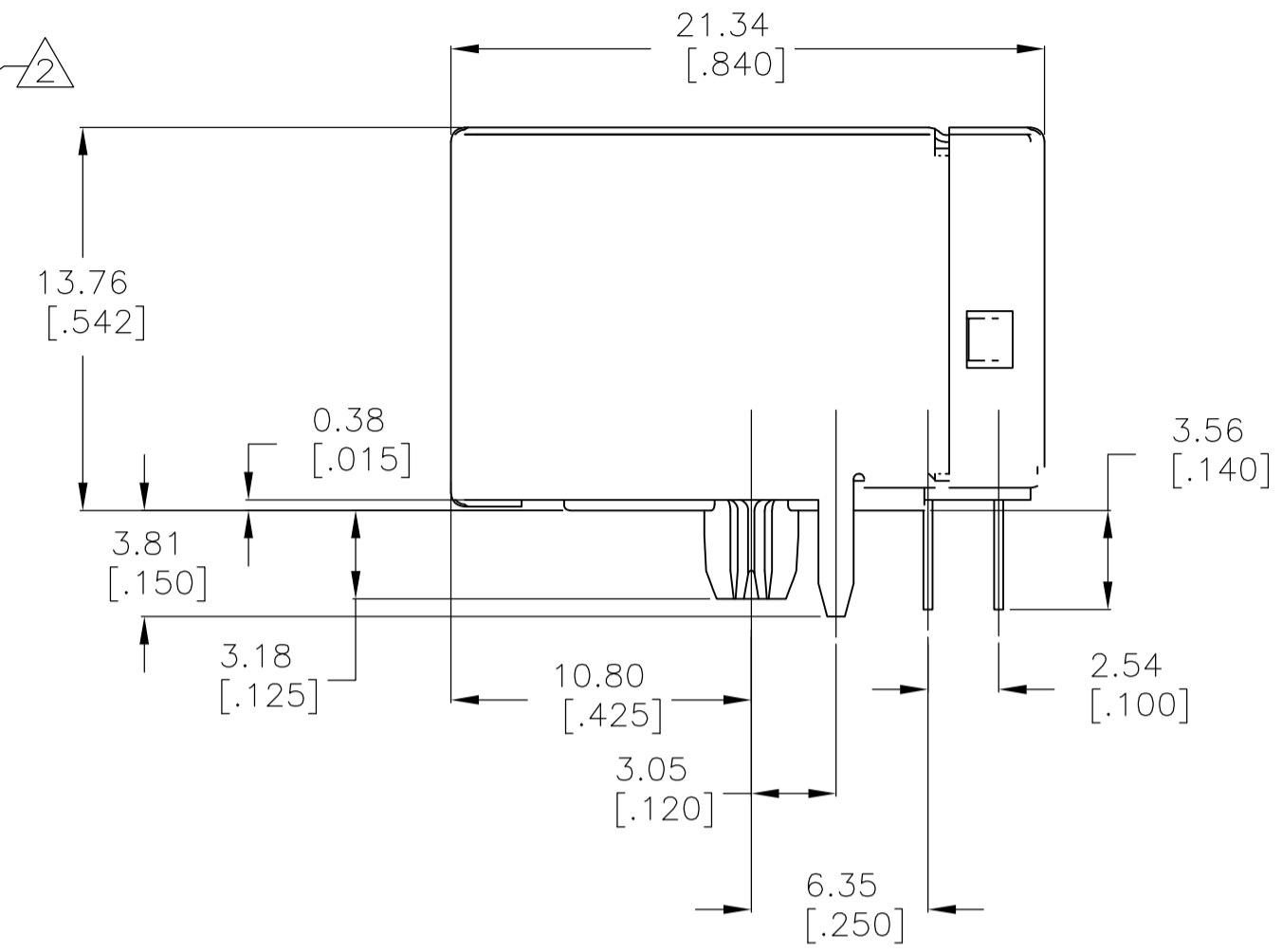
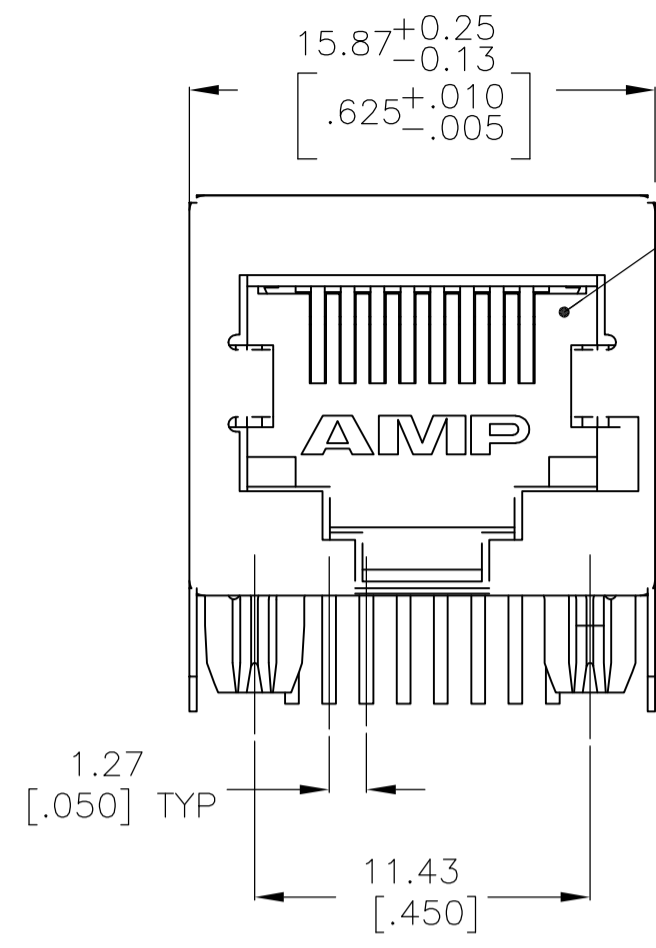


THIS DRAWING IS UNPUBLISHED. RELEASED FOR PUBLICATION
 © COPYRIGHT - By - ALL RIGHTS RESERVED.

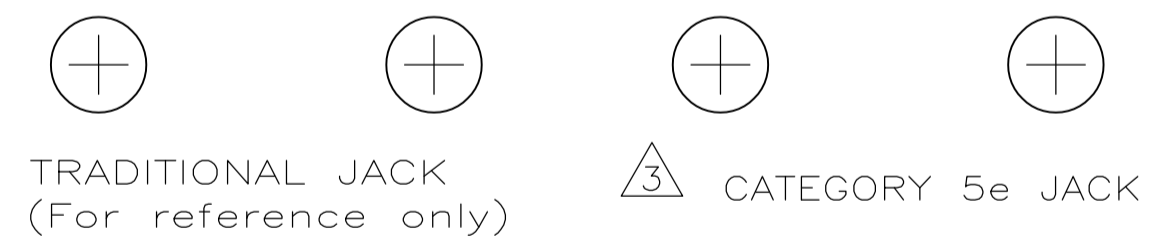
LOC		DIST		REVISIONS			
P	LTR	DESCRIPTION	DATE	DWN	APVD		
AA	00						
	D1	REVISED PER ECO-11-005033	26MAR11	RK	HMR		
	E	ECO-11-019003	19SEP11	JJ	MQW		
	F	ECO-13-009636	9JUN13	C.W.S.H			



SUGGESTED PANEL CUTOUT
SCALE 4:1

SUGGESTED PC BOARD LAYOUT
COMPONENT SIDE

- MATERIAL: HOUSING HTN, BLACK.
 TERMINALS - 0.33[.013] THICK PHOS BRONZE PLATED WITH 1.27µm[.000050] MINIMUM THICK HARD GOLD IN LOCALIZED AREA AND 3.81µm [0.000150] MINIMUM THICK MATTE TIN IN SOLDER AREA OVER 1.27µm[.000050] MINIMUM THICK NICKEL UNDERPLATE.
 SHIELDS - 0.254[.010] THICK COPPER ALLOY PLATED WITH 1.27µm[.000050] MINIMUM NICKEL AND 2.03 µm [0.000080] MINIMUM HOT TIN DIP ON PCB GROUND TABS.
- JACK CAVITY CONFORMS TO FCC RULES AND REGULATIONS, PART 68 SUBPART F.
- CAUTION: CATEGORY 5 JACK SOLDER TAIL POSITIONS DO NOT FOLLOW SAME NUMBER SEQUENCE AS THAT OF TRADITIONAL JACKS.
- USE #30 DRILL BIT OR 3.25mm DRILL BIT WHEN PRODUCING THESE PCB HOLES.
- OBSOLETE PARTS: OBSOLETE CIS STREAMLINING PER D.RENAUD/D.SINISI
- SHIELD MATERIAL: PHOS BRONZE.



\triangle	BLACK	5558342-3
\triangle OBSOLETE	GRAY	5558342-2
	BLACK	5558342-1
	HOUSING COLOR	PART NUMBER

THIS DRAWING IS A CONTROLLED DOCUMENT.		DWN	01JUNE2005	TE Connectivity	
		CHK	T. PITTS/L.A.MAYER		
		APVD	J.WESTMAN		
		PRODUCT SPEC	S.FLICKINGER		
		APPLICATION SPEC	108-1163-2		
		WEIGHT	114-2048		
MATERIAL		FINISH	SEE NOTE 1	SCALE	4:1
SEE NOTE 1		SEE NOTE 1	SEE NOTE 1	SHEET	1 OF 1
CUSTOMER DRAWING		WEIGHT	-	REV	F